

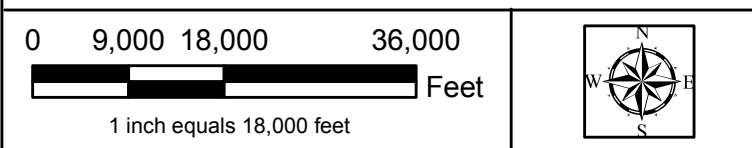
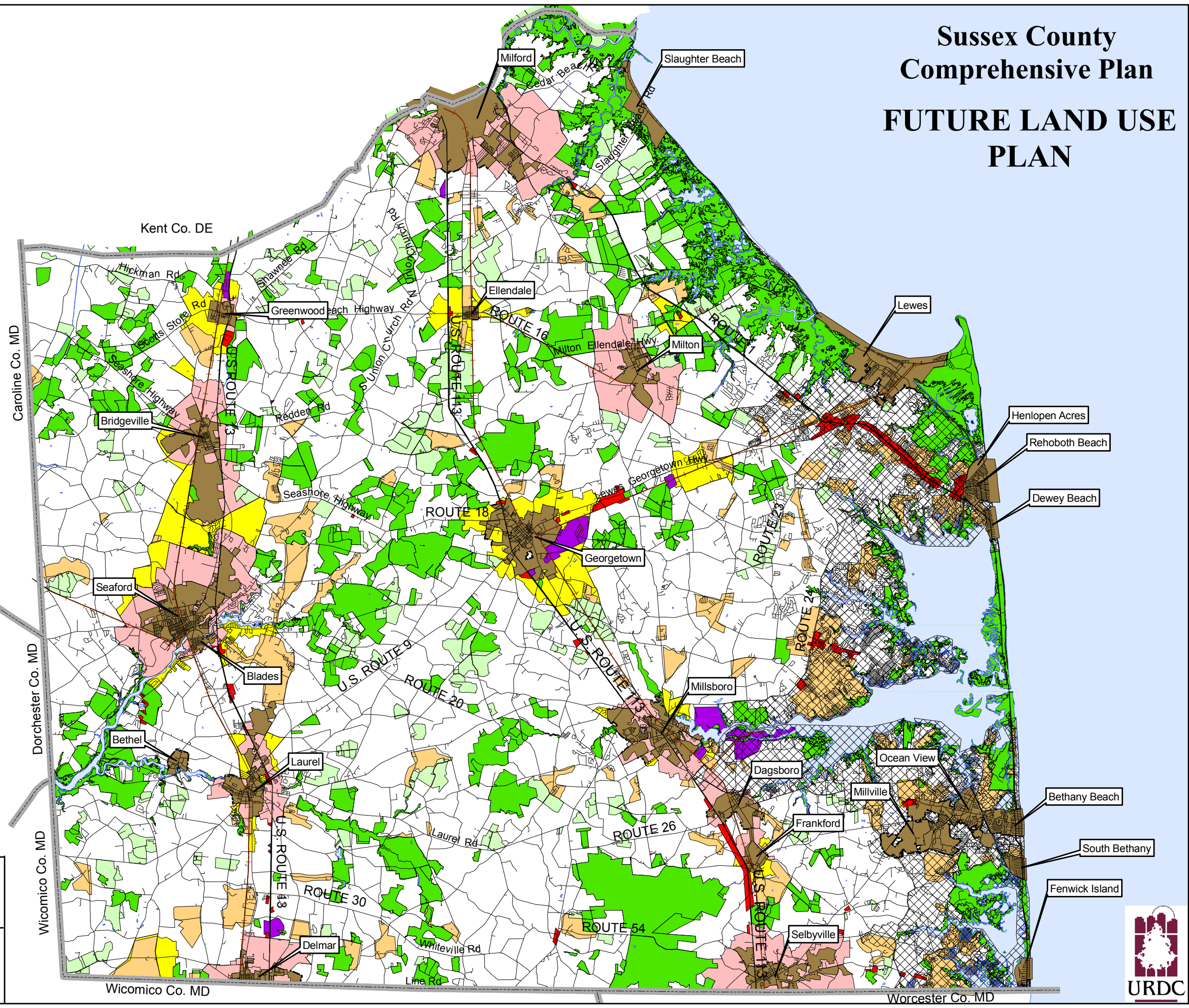
Sussex County Comprehensive Plan FUTURE LAND USE PLAN

Growth Areas

- Municipality
- Town Center
- Developing Area
- Environmentally Sensitive Developing Area
- Mixed Residential Areas
- Highway Commercial Areas
- Planned Industrial Areas

Rural Areas

- Low Density Area
- Protected Lands
(All Federal lands, State lands, agricultural easements, private conservancy lands, major wetlands and lands preserved by other conservation easements)
- Agricultural Preservation Districts Under the State Program
(A voluntary program. Only a very limited number of homes allowed on a tract under State regulations during the time of an agreement. Participating landowners are eligible to sell development rights to the State.)



Base Map Provided By:
Sussex County
Mapping Department

Sources:
DNREC
DE Office of State Planning Coordination
DE Office of Transportation
United States Geological Survey

